



PD for recruitment - BRUCE PULMAN PARK TRUST (BPPT) GYMSPORT & RECREATION CENTRE (GSRC)

POSITION	PART TIME COACH – MEN’S GYMNASTICS
REPORTS TO	PROGRAMME HEAD COACH

1. Purpose for the Position:

This role will be responsible for reliable, enthusiastic and motivated delivery of high quality gymnastics and movement orientated physical activities to the participants and/or members of the GSRC. This is a part time coaching position.

2. Position Context:

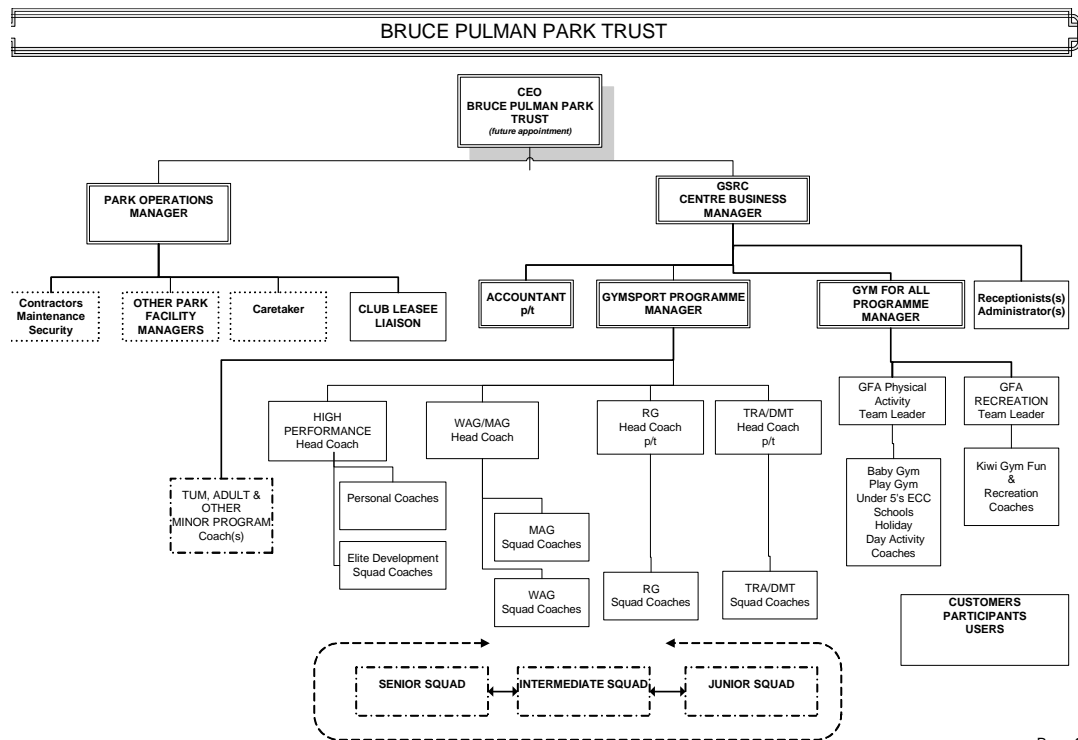
The Bruce Pulman Park is a unique international sports, recreational and function facility featuring world class sports outdoor and indoor facilities in 130 acres of spacious park surroundings. The Park is a totally new concept in New Zealand sports, recreational and leisure amenities geared towards community excellence at all levels.

The Bruce Pulman Park Gymsport & Recreation Centre is a \$5million dollar purpose built gymnastics and trampoline facility providing training facilities for the Counties Manukau Gymnastic Club members and the community at large.

The core business of the Centre is the lifelong delivery of high quality physical activities, life skills, recreational gymnastics and competitive gymsport programmes to the community. Major customer groups are schools, early childhood organisations, other sports (cross training), babies, under 5 year olds, children, youth and adults.

The organisational structure for the GYMSPORT & RECREATION CENTRE illustrates the reporting lines for a Gymsport Competition Coach

Position in Organisation:



3. Responsibilities:

- ◆ Responsible to the Head Coach in respect to the delivery of coaching services in accordance with the prescribed programme plan.
- ◆ Responsible for coaching MAG Level 5 - 8
- ◆ Wearing of a GSRC uniform during hours of employment.
- ◆ Continuous updating of knowledge and coaching qualifications.

Duties

- ◆ Reliable and professional delivery of high quality coaching under the guidance of the Head Coach/Team Leader.
- ◆ Deliver coaching skills that will enable gymnasts/participants to achieve their full potential in the respective activity
- ◆ Teach/instruct, share and impart knowledge to train and prepare gymnasts/participants to achieve the programme outcomes measured through improved physical wellbeing, self achievement, competition success and/or skill learning accomplishment
- ◆ Collate and report progress data as required
- ◆ Communication with Head Coach/Team Leader on any issues or concerns that may arise in relation to the gymnasts/participants
- ◆ Availability to undertake coaching duties on a volunteer basis in relation to attendance at competition and/or participation events as outlined in the GSRC annual calendar of events.
- ◆ Application of the Health & Safety and Staff Handbook Regulations
- ◆ Assist with activities, events, promotions undertaken by the BPPT
- ◆ Any other duties as may be requested by the Head Coach

4. Relationships:

Internal	External
GSRC Business Manager GSRC Programme Managers Gym for All Team Leaders Gymsport Head Coaches All other GSRC Staff Office Administrator Club Members Participants	GSNZ MAG SDC

5. Qualifications/Experiences

The following key requirements are desirable:

Current GSNZ Coaching Qualification at the level of competency relevant to the position
Demonstrated experience in coaching/teaching
Experience as a Gymnastics Coach OR a retired gymnast/coach in training
Practical understanding of Human Movement/Exercise/Sport Science in relation to coaching gymnastics
Current First Aid Certificate
Computer skills in Microsoft basic programmes

6. Personal Qualities

The following qualities are desirable:

Reliable
Excellent oral communication skills
Excellent interpersonal skills and ability to build relationships at all levels
A 'team player'
Flexible and confident
Confidentiality
Demonstrate a commitment to personal growth and development